

Hypertherm®

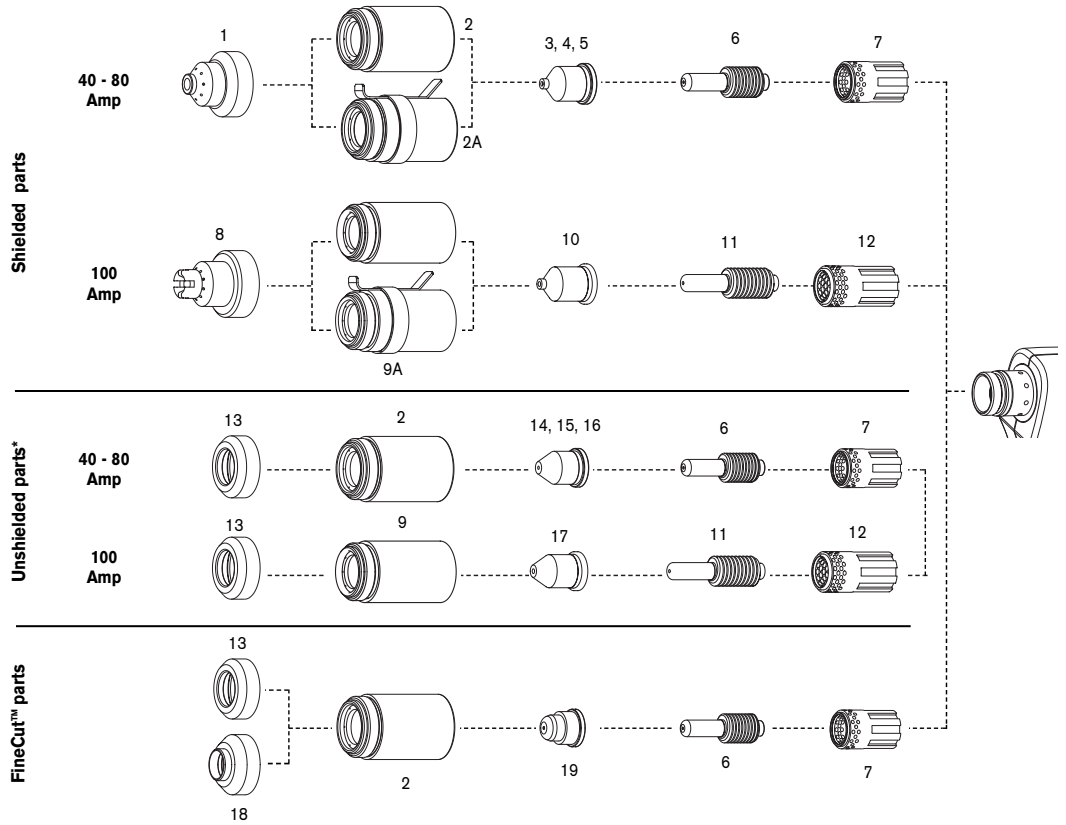
powermax1650® G3 SERIES™

Machine torch parts

T100 consumables



Powermax1650



T100M torch

	100 AMP		80 AMP		60 AMP		40 AMP		QUANTITY PER PACKAGE	
	ITEM NUMBER	PART NUMBER	ITEM NUMBER	PART NUMBER	ITEM NUMBER	PART NUMBER	ITEM NUMBER	PART NUMBER		
Shielded parts	Shield	8	220047	1	120930	1	120930	1	120930	1
	Cap, Shield	9	220048	2	120928	2	120928	2	120928	1
	Cap, Shield (ohmic)	9A	220206	2A	220061	2A	220061	2A	220061	1
	Nozzle	10	220011	5	120927	4	120931	3	120932	5
	Electrode	11	220037	6	120926	6	120926	6	120926	5
	Swirl Ring	12	220051	7	120925	7	120925	7	120925	1
Unshielded parts*	Deflector	13	120979	13	120979	13	120979	13	120979	1
	Cap, Shield	9	220048	2	120928	2	120928	2	120928	1
	Nozzle	17	220064	16	120980	15	220007	14	220006	5
	Electrode	11	220037	6	120926	6	120926	6	120926	5
	Swirl Ring	12	220051	7	120925	7	120925	7	120925	1
FineCut™ parts	Deflector	—	—	—	—	—	13	120979	1	
	Deflector, CE	—	—	—	—	—	18	220325	1	
	Cap,Shield	—	—	—	—	—	2	120928	1	
	Nozzle	—	—	—	—	—	19	220329	5	
	Electrode	—	—	—	—	—	6	120926	5	
Swirl Ring	—	—	—	—	—	7	120925	1		

WARNING

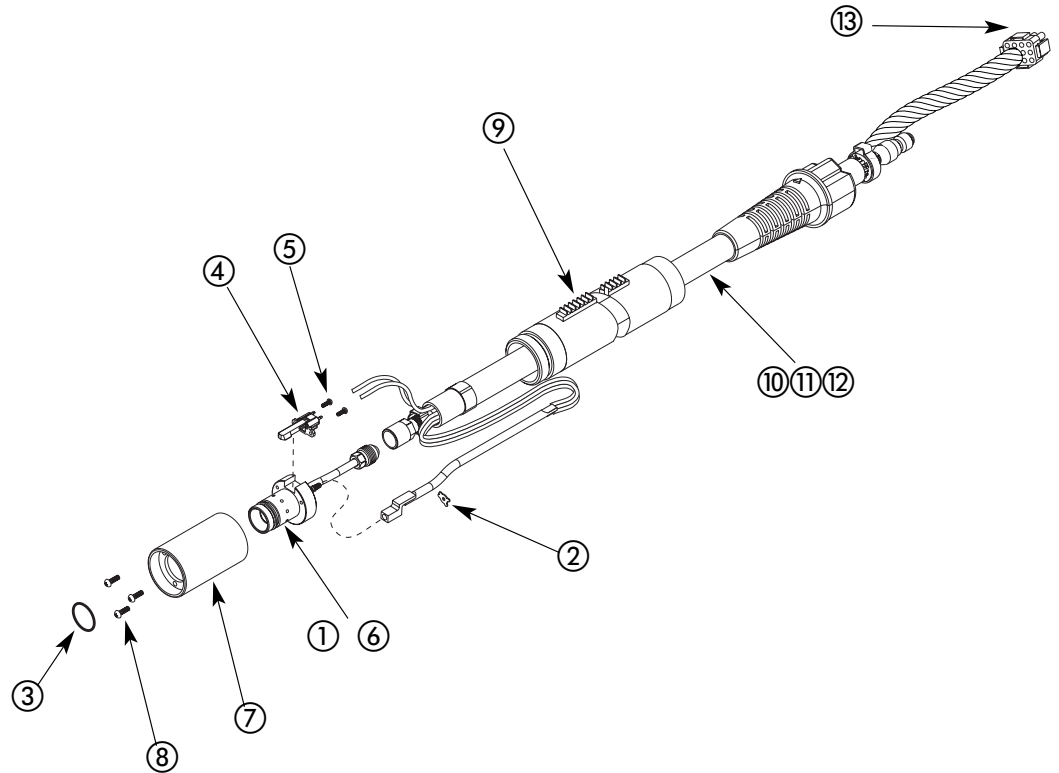
* In countries following CE standards, unshielded consumables may only be used in mechanized torch applications.

Unshielded consumables: maintain torch-to-work distance of approximately 3/16" (4.8 mm).

Genuine Hypertherm Consumables

The only way to ensure maximum performance

Powermax1650 T100M machine torch assembly



T100M torch

ITEM TITY NUMBER	PART NUMBER	DESCRIPTION	QUAN
	059265 [^]	T100M Machine Torch Assembly with 25 ft (7.6 m) Lead	
	059268 [^]	T100M Machine Torch Assembly with 35 ft (10.7 m) Lead	
	059272 [^]	T100M Machine Torch Assembly with 50 ft (15.2 m) Lead	
1	128754	T100M Torch Main Body Replacement Kit	1
2	027889	Retaining Clip	1
3	058519	O-ring	1
4	128639	Cap-off Sensor Replacement Kit	1
5	075571	Cap-off Sensor Screws	2
6	128768	T100/T100M Torch Head Repair Kit	1
7	128643	Torch Mounting Sleeve Replacement Kit	1
8	075004	Torch Mounting Screws	3
9	128710	Torch Positioning Sleeve	1
10	128753	25 ft (7.6 m) Torch Lead Replacement Kit	1
11	128751	35 ft (10.7 m) Torch Lead Replacement Kit	1
12	128759	50 ft (15.2 m) Torch Lead Replacement Kit	1
13	128638	ETR Repair Kit (Regional Repair Centers only)	1
	128645	Torch Mounting Kit (for reassembly after installation)	1

[^] Assembly includes consumables

Hypertherm, Powermax, G3 Series, FineCut and PAC are trademarks of Hypertherm, Inc. and may be registered in the United States and/or other countries.

Hypertherm[®]

The world leader in
plasma cutting technology™

www.hypertherm.com

Hypertherm, Inc. USA 603-643-3441 Tel 603-643-5352 Fax consumable.info@hypertherm.com

Hypertherm Automation USA 603-298-7970 Tel 603-298-7977 Fax info@hyperthermautomation.com

Hypertherm Plasmatechnik GmbH Deutschland 49 6181 58 2100 Tel 49 6181 58 2134 Fax HTDeutschland.info@hypertherm.com

Hypertherm (S) Pte Ltd Singapore 65 841 2489 Tel 65 841 2490 Fax HTSingapore.info@hypertherm.com

Hypertherm UK Ltd England 44 1928 579 074 Tel 44 1928 579 604 Fax HTUK.info@hypertherm.com

France 0805 050 111 Tél 0805 050 222 Fax HTFrance.info@hypertherm.com

Hypertherm S.r.L. Italia 39 02 725 46 312 Tel 39 02 725 46 400 Fax HTItalia.info@hypertherm.com

Hypertherm Europe B.V. Nederland 31 165 596908 Tel 31 165 596901 Fax HTEurope.info@hypertherm.com

Japan 81 05 5975 7387 Tel 81 05 5975 7376 Fax HTJapan.info@hypertherm.com

Hypertherm Brasil Ltda. Brasil 55 21 2278 6162 Tel 55 21 2578 0947 Fax HTBrasil.info@hypertherm.com