

# Powermax45®

## T45v/T45m hand/machine torch consumables



Minimum order quantity		1	1	5	5	1				
Consumable type	Torch type	Shield/deflector	Retaining cap	Nozzle	Electrode	Swirl ring				
Drag cutting (15–45 A)	Hand	220569 (30 A) <sup>1</sup>	220483 (30 A) <sup>1</sup>	220480 (30 A) <sup>1</sup>	220478 (30 A) <sup>1</sup>	220479 (30 A) <sup>1</sup>				
		220674 (45 A)	220713 (45 A)	220671 (45 A) <sup>2</sup>	220669 (45 A) <sup>2</sup>	220670 (45 A)				
Quantity in kit		2	1	1	6	7	1			
NEW Essential cutting kit – 851478 CSA (15–45 A)	Hand	220674	220717 (Deflector) <sup>3</sup>	220713		220671	220718 (Unshielded)	220669	220670	
NEW Essential cutting kit – 851477 CE (15–45 A)							220671			
Combination kit 428442 <sup>4</sup>										



- <sup>1</sup>Use T30v 30 A consumables for fine feature cutting on thin metals.
- <sup>2</sup>Consumable available in bulk packaging. See order information below.
- <sup>3</sup>Components are unique to the CSA kit, part number 851478.
- <sup>4</sup>Kit contains 2 nozzles (220671) and 2 electrodes (220669).



Minimum order quantity		1	1	5	5	1
Consumable type	Torch type	Shield/deflector	Retaining cap	Nozzle	Electrode	Swirl ring
Mechanized (15–45 A)	Machine	220673 <sup>2</sup>	220713 or 220719 (ohmic)	220671 <sup>2</sup>	220669 <sup>2</sup>	220670

<sup>2</sup>Consumable available in bulk packaging. See order information below.



Minimum order quantity		1	1	5	5	1
Consumable type	Torch type	Shield/deflector	Retaining cap	Nozzle	Electrode	Swirl ring
Gouging <sup>5</sup> (15–45 A)	Hand/Machine	220675	220713	220672	220669 <sup>2</sup>	220670

<sup>2</sup>Consumable available in bulk packaging. See order information below.




Minimum order quantity		1	1	5	5	1
Consumable type	Torch type	Shield/deflector	Retaining cap	Nozzle	Electrode	Swirl ring
Unshielded <sup>5</sup> (15–45 A)	Hand/Machine	220717	220713	220718	220669 <sup>2</sup>	220670

<sup>2</sup>Consumable available in bulk packaging. See order information below.

<sup>5</sup>In countries following CE standards, unshielded consumables may only be used in mechanized applications.



Minimum order quantity		1	1	1	1	
Consumable type	Torch type	Retaining cap	Nozzle		Electrode	Swirl ring
HyAccess drag-cutting (15–45 A)	Hand	420148	420144		420137	220670
HyAccess gouging (15–45 A)			420147			
Quantity in kit		1	1	1	2	1
HyAccess kit – 428337 (15–45 A)	Hand	420148	420144 (cutting)	420147 (gouging)	420137	420211 <sup>4</sup>
		HyAccess cutting only starter pack – 428443 <sup>5</sup>				
		HyAccess gouging only starter pack – 428444 <sup>6</sup>				

<sup>4</sup>Part number 420211 is interchangeable with part number 220670

<sup>5</sup>Starter pack contains 1 retaining cap (420148), 1 cutting nozzle (420144) and 1 electrode (420137)

<sup>6</sup>Starter pack contains 1 retaining cap (420148), 1 gouging nozzle (420147) and 1 electrode (420137)

### T45v/T45m consumable bulk kits

Order quantity	25	25	10
Bulk kit part number	228843	228844	228845
Contents	220671 nozzle	220669 electrode	220673 shield



See pages 56–57 for current system part number information.

# T45v hand torch parts

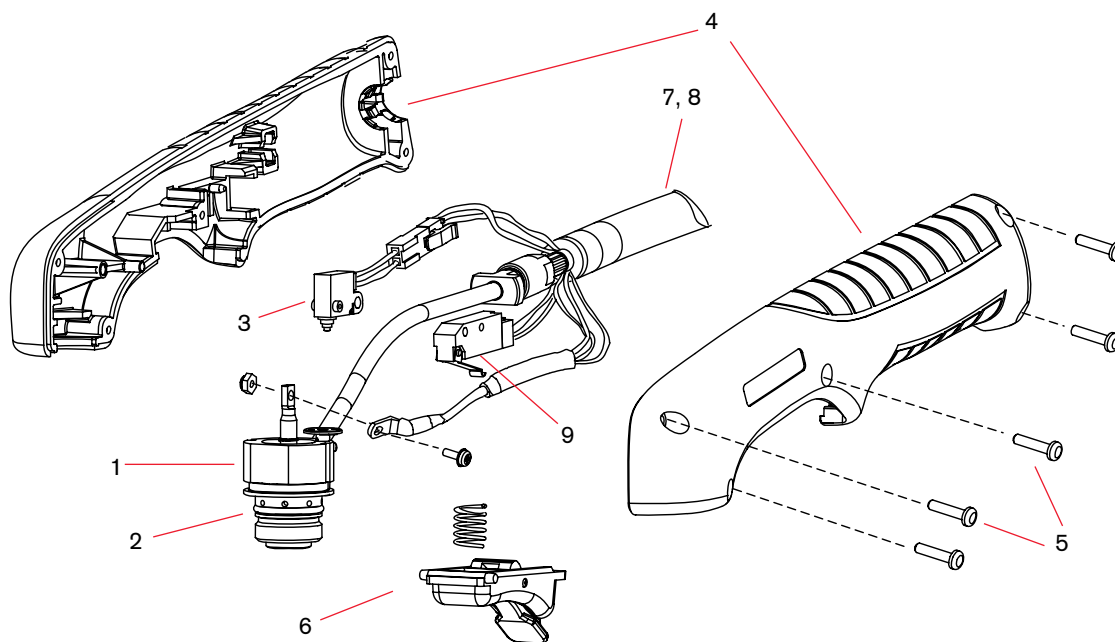
For use with the Powermax45®



## T45v hand torch parts

Item	Kit/Part number	Description
	088008 <sup>1</sup>	T45v hand torch assembly with 6.1 m (20') leads
	088009 <sup>1</sup>	T45v hand torch assembly with 15.2 m (50') leads
1	228346	Kit: Torch body replacement
2	058503	O-ring: torch body
3	228109	Kit: Cap-sensor switch replacement
4	228313	Kit: handle
5	075714	Handle screws
6	002244	Safety trigger and spring replacement
7	228315	Kit: Torch lead replacement, 6.1 m (20')
8	228316	Kit: Torch lead replacement, 15.2 m (50')
	228300	Work lead with clamp, 6.1 m (20')
	228307	Work lead with clamp, 15.2 m (50')
9	128642	Kit: T45v/T30v start switch replacement

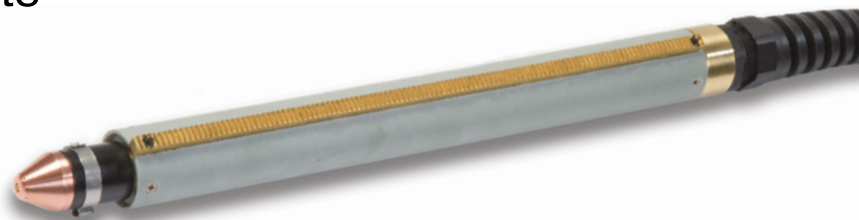
<sup>1</sup>Assembly includes consumables.



See pages 56–57 for current system part number information.

# T45m machine torch parts

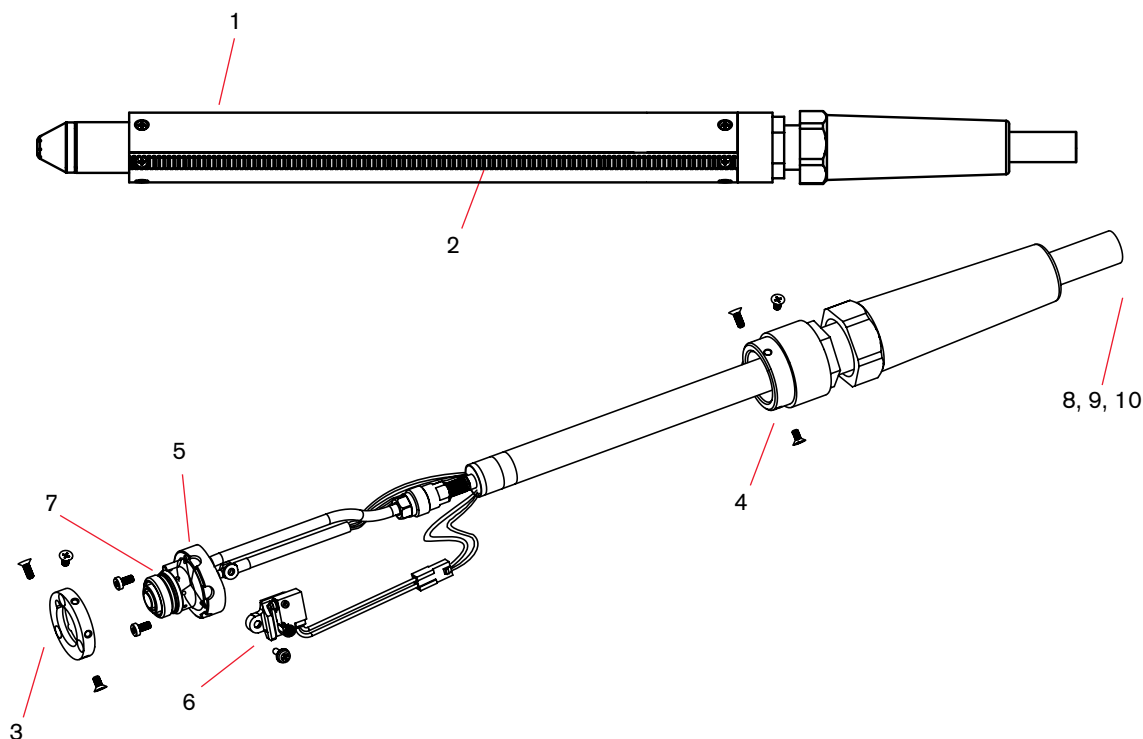
For use with the Powermax45®



## T45m machine torch parts

Item	Kit/Part number	Description
	088010 <sup>1</sup>	T45m machine torch assembly with 7.6 m (25') leads
	088011 <sup>1</sup>	T45m machine torch assembly with 10.7 m (35') leads
	088012 <sup>1</sup>	T45m machine torch assembly with 15.2 m (50') leads
1	228228	Kit: T45m positioning sleeve
2	228229	Kit: T45m removable gear rack
3	228322	Kit: Front mounting ring
4	228323	Kit: Rear mounting ring
5	228320	Kit: T45m torch body replacement
6	228321	Kit: T45m cap-sensor switch replacement
7	058503	O-ring: torch body
8	228317	T45m torch lead replacement, 7.6 m (25')
9	228318	T45m torch lead replacement, 10.7 m (35')
10	228319	T45m torch lead replacement, 15.2 m (50')
	128650	On/Off pendant for machine torch, 7.6 m (25')
	128651	On/Off pendant for machine torch, 15.2 m (50')
	128652	On/Off pendant for machine torch, 22.8 m (75')
	228300	Work lead with clamp, 6.1 m (20')
	228307	Work lead with clamp, 15.2 m (50')

<sup>1</sup>Assembly includes consumables.



See pages 56-57 for current system part number information.